

Washington Township Reopening of Schools Plan for In-Person Learning

REOPENING OF SCHOOLS

Thank you for choosing Washington Township Schools! We appreciate your continued support and flexibility as we carefully navigate the complexities of reopening schools during this pandemic.

CHOICES

WT Virtual Academy -You are already familiar with our virtual learning processes. Should you choose to continue this option after we reopen in-person, students may experience changes to their teacher(s) as well as potential changes to their schedules.

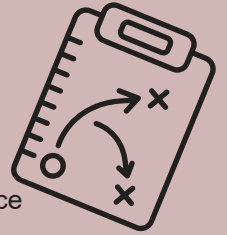
In-person learning will occur in traditional class rooms with mitigation strategies related to Covid-19 procedures and protocols.

- Developmental Preschool
Open Date: Oct. 12
Hybrid (2 days in-person instruction and 2 days virtual instruction)
- Elementary
K-2 Open Date: Oct. 12
Gr 3-5 Open Date: Oct. 19
Full Time (in-person, 5 days per week)
- Secondary
Grades 6-12 Open Date: Oct. 19
Hybrid (2 days in-person at school & 3 days virtual learning from home per week.)



THE PLAN

- Full Time virtual instruction remains available. Should you choose to continue this option after we reopen in-person, elementary students will experience changes to their teacher(s) or schedules; secondary students may experience some changes depending upon enrollment.
- In-person instruction will be five days per week for elementary students in grades K-5. Grades K-5 will resume initially on a gradual reopening schedule.
- In-person instruction will be a hybrid model for students in grades 6-12. This will be 2 days in-person and 3 days virtual learning each week.
- Safety precautions recommended to us by MCPHD, ISDH, and CDC summarized on pg. 2.



WT Thresholds for Open/Close of Schools

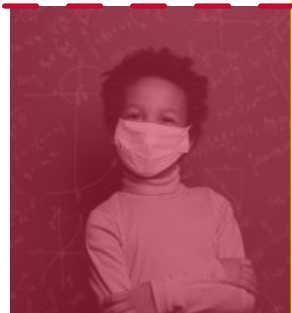
Data Based on MCPHD COVID-19 School Guidance Dashboard Rate of Positive Cases

Percent Positivity	Level	Elementary Schools	Middle & High Schools
8% or lower	Green (Open)	Open for full time in-person learning <i>(along with a Virtual Academy from home option)</i>	Open for hybrid in-person learning - 2 days in-person and 3 days virtual per week <i>(along with a Virtual Academy from home option)</i> ***If data remains under 5% for extended period of time, full time in-person can be considered***
8.1% or higher	Red (Closed)	Virtual Learning From Home <i>(with the exception of designated assessments and students where IEP determines in-person services per School Board Resolution)</i>	Virtual Learning From Home <i>(with the exception of JEL, designated assessments and students where IEP determines in-person services per School Board Resolution)</i>

*The data must maintain threshold range for two consecutive weeks in order to change levels.

RESOURCES

- msdwt.k12.in.us
- marionprepares.org
- cdc.gov/coronavirus/2019-ncov/index.html





WASHINGTON
TOWNSHIP SCHOOLS

Washington Township Reopening of Schools Plan for In-Person Learning

SAFETY PRECAUTIONS



MASKS

Students and staff are required to wear them while on school property and on buses.



WATER FOUNTAINS

Our drinking fountains will be inoperable with the exception of water bottle filling stations.



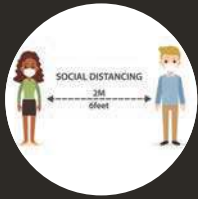
GOOD HYGIENE

Students and staff will be asked to wash their hands frequently and schedules will accommodate time for this routine practice throughout the day.



VISITORS

Visitors are restricted in our schools. Parents and non-essential visitors are strongly encouraged to contact the school instead of coming into front offices. Masks are required.



SOCIAL DISTANCING

Students and staff are expected to maintain a distance of 3-6 ft as often as possible. We will remind students not to share supplies and keep their hands to themselves.



FACILITY CLEANING

We will utilize products confirmed by the manufacturer and EPA to kill Coronavirus and other viruses. WT will continue to clean and disinfect school facilities and equipment in alignment with guidance from the CDC.



CAFETERIA

Elementary students will eat breakfast and lunch in their classrooms. Secondary students will eat lunch in the cafeteria where modifications will be made to allow for more space utilization.



SELF ASSESS

Students and staff should not report to school if they have Covid-19 symptoms.



SCHOOL BUS

We encourage parents/guardians to provide their child transportation to and from school; however, if this is not possible we will expect students to wear masks, sit with siblings, ride no more than two per seat, face forward and not touch each other.

